

# GENERAL DIRECTORATE OF FOOD AND CONTROL

<http://www.tarim.gov.tr/GKGM/Sayfalar/AnaSayfa.aspx>





- 1. MINISTRY OF FOOD, AGRICULTURE AND LIVESTOCK**
- 2. GENERAL DIRECTORATE OF FOOD AND CONTROL**
  - i. FOOD SAFETY POLICY**
  - ii. PLANT HEALTH**
  - iii. ANIMAL HEALTH AND WELFARE**
  - iv. FOOD AND FEED SAFETY**
  - v. RISK ASSESSMENT**
  - vi. DATABASES**



# MINISTRY OF FOOD, AGRICULTURE AND LIVESTOCK



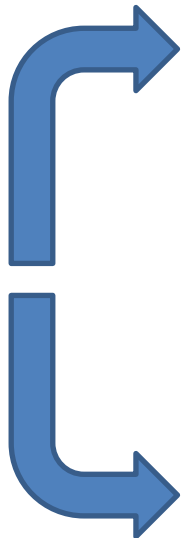


Strategic  
Areas

- . AGRICULTURAL PRODUCTION AND SECURITY OF SUPPLY
- . FOOD SAFETY
- . PLANT HEALTH, ANIMAL HEALTHY AND WELFARE
- . AGRICULTURAL INFRASTRUCTURE AND RURAL DEVELOPMENT
- . INSTITUTIONAL CAPACITY

It's estimated that world population will reach approximately to 9,6 billion, while the country population, will be 93,5 million in 2050  
The increase in the population of the country and the world and the change in the demographic structure, enforce sustainable and enough safe food production

# STRATEGICAL TARGETS



AREAS	PURPOSES	TARGETS
Agricultural production and security of supply	To ensure food safety and accessibility of high quality agricultural products with the preservation of agricultural production resources	<p>to protect agricultural resources , improve and ensure sustainability</p> <p>to develop e and disseminate methods and technologies to increase efficiency and quality on production</p> <p>to ensure the accessibility of agricultural products and food safety</p>
Food Safety	to provide food safety conforming international standards from production to consumption	<p>to increase the effectiveness of food and feed control services</p> <p>to strengthen the infrastructure of food and feed establishments and improve their compliance to the standards</p> <p>to increase food safety awareness in the community</p>
Plant health, animal health and welfare	<p>To increase crop production through effective and environmentally safe plant health measures and preserving the quality</p> <p>to control and eradicate o f animal diseases and pests , and to ensure animal welfare</p>	<p>to promote Integrated Pest Management and biologic control activities on plant health</p> <p>to promote control and management of plant protection products and applying equipments</p> <p>to develop internal and external quarantine services in crop production</p> <p>to develop struggling services against animal diseases and pests</p> <p>to create standards and systems necessary to ensure animal welfare</p>
Agricultural Infrastructure and Rural Development	to improve agricultural and social infrastructure services, to increase the attractiveness of rural areas by providing rural development and welfare	<p>to improve agricultural infrastructure services</p> <p>to ensure evaluation of agricultural products on - site and increase their added value</p> <p>to raise living standards in rural areas and to provide rural development</p>
Institutional Capacity	To provide institutional excellence in order to serve fast ly, efficient ly and high quality	<p>to activate administrative system and human resource management</p> <p>to develop technological and physical infrastructure , to improve social facilities</p> <p>to enhance institutional image and increase the effectiveness and apperency</p>





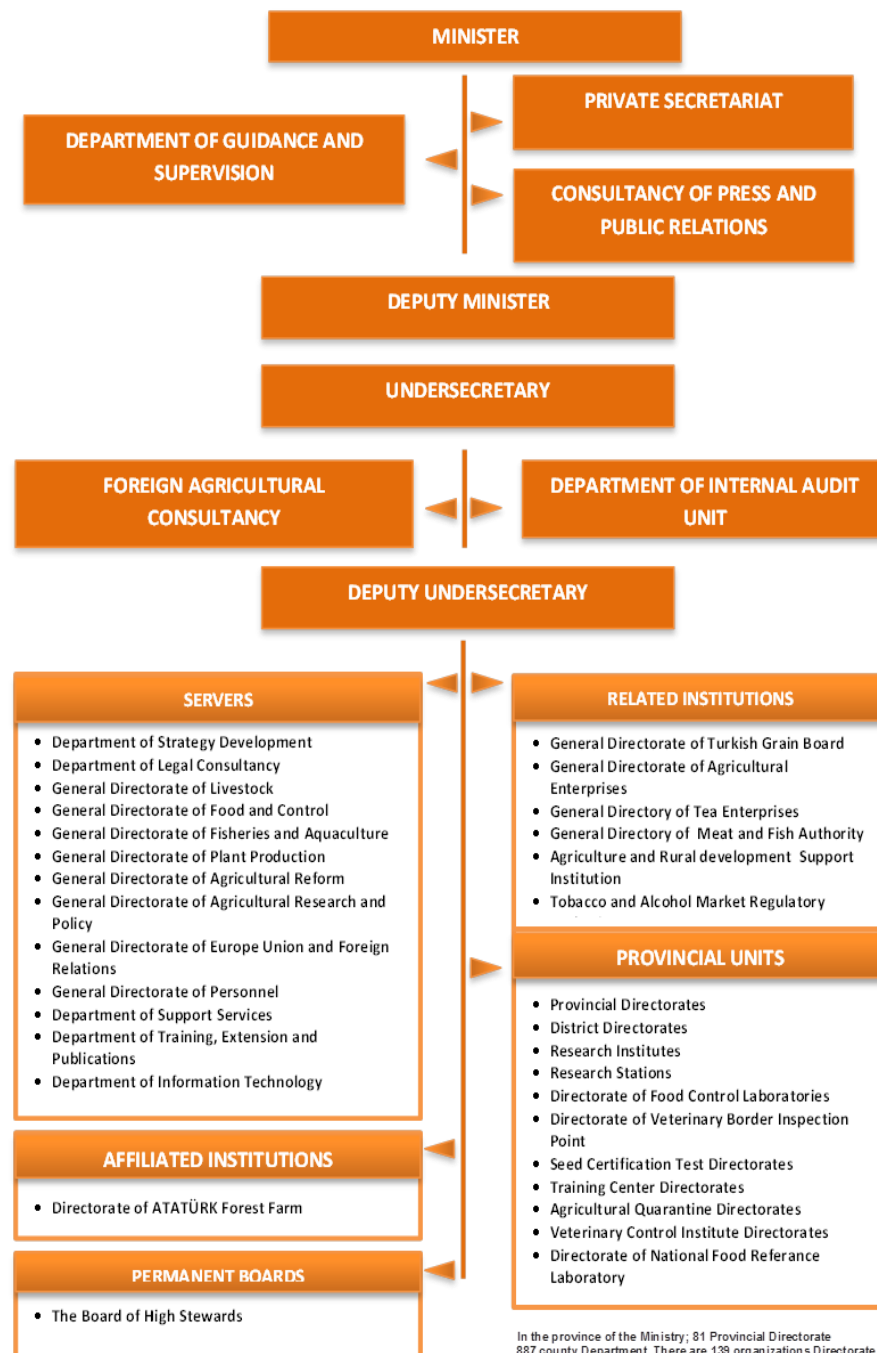
## MISSION

- To perform the accessibility of safe food and quality of agricultural products with the needs of the country and the world market
- To ensure the sustainable use of agricultural and ecological resources
- To identify and implement policy in order to raise the standard of living in rural areas

## VISION

- To ensure the highest level of satisfaction for producers and consumers in the field of food and agriculture
- Turkey is a regional leader, to become a global actor in the world

## ORGANIZATION CHART

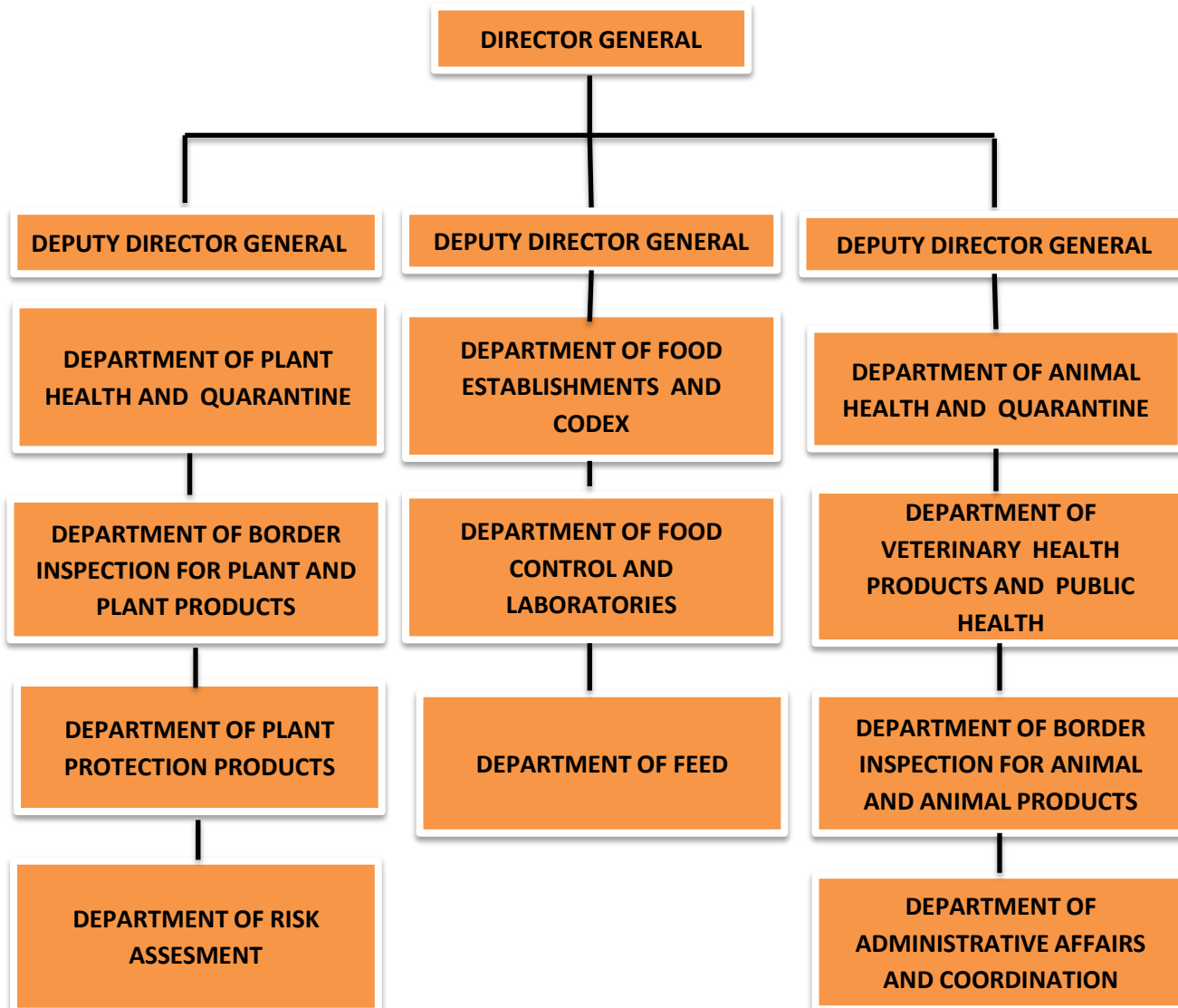




# **DIRECTORATE GENERAL OF FOOD AND CONTROL**



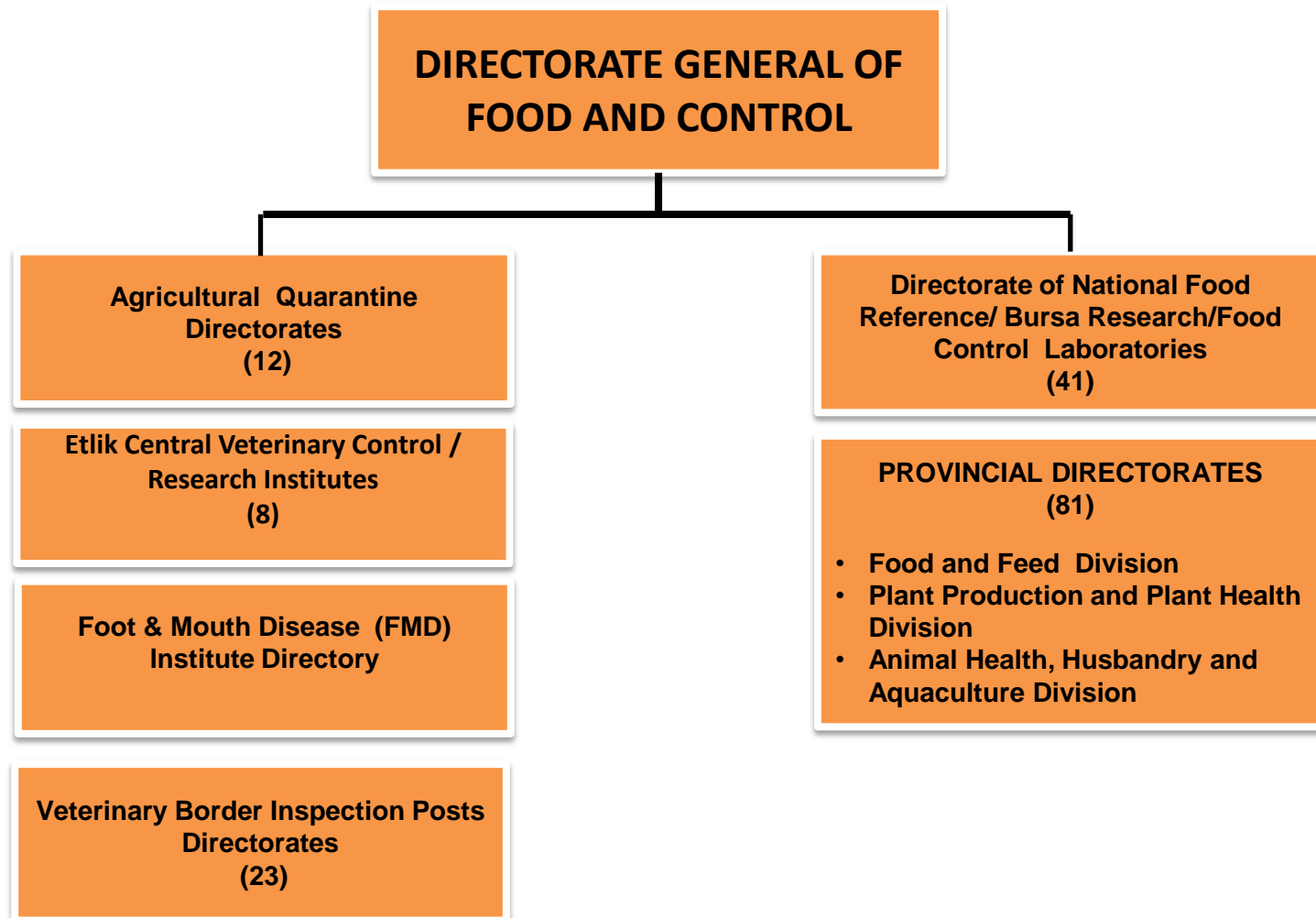
# ORGANIZATION CHART







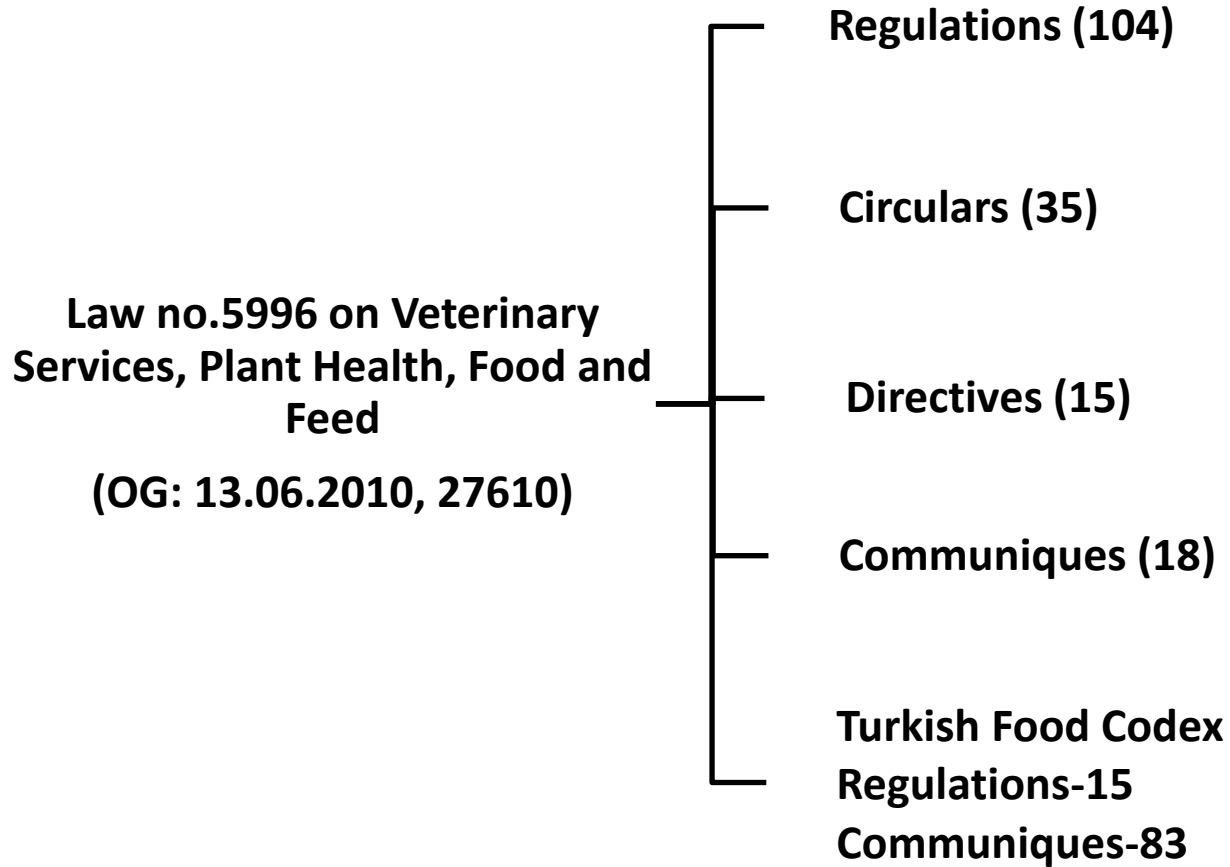
# AFFILIATED INSTITUTIONS





As for the supply of food safety and the protection of public health, collaborative studies are carried out with the international organizations, such as, **the European Food Safety Authority-EFSA-, World Organisation for Animal Health-OIE-, The Food and Agriculture Organization of the United Nations-FAO-,World Health Organization-WHO-, The European Medicines Agency-EMA-, The European Directorate for the Quality of Medicines & HealthCare-EDQM-, European and Mediterranean Plant Protection Organization-EPPO-, International Plant Protection Convention-IPPC-, World Trade Organization-WTO-**







## FOOD SAFETY POLICY

---

General Directorate of Food and Control defined its food safety policy as;

***"Food Safety from Farm to Table"***

for the assurance of a high level of protection of human health and consumers' interest, while taking into account of the protection of animal health and welfare, plant health and the environment.

# FOOD SAFETY POLICY

## Protection of Consumer Interests and Environment



**Plant Health**



**Animal Health and Welfare**



**Food and Feed Safety**



**Risk Assessment**

A large cadre of personnel consisting approximately 25 thousand of veterinarians, agricultural engineers, food engineers and with other professions





## INVESTMENT PROJECTS ON FOOD SAFETY

---

- Plant Health Activities and Control Project
- Struggling with Animal Diseases and Pests Project
- Foot and Mouth Disease Control Project (Phase 2)
- Oral Vaccination Project Against Rabies
- Electronic Identification and Registration of Sheep and Goats Project
- Vaccine Production Centre Establishment Project
- Strengthening of Food Safety and Control System Project



## BUDGET

	<b>2013 (TL)</b>	<b>2014 (TL)</b>	<b>2015 PROPOSAL (TL)</b>
Investment Projects	83.650.000	88.000.000	102.150.000
Current Budget	37.570.550	39.311.340	45.768.000
Agricultural Support	145.000.000	141.000.000	157.550.000
<b>Total</b>	<b>266.220.550</b>	<b>268.311.340</b>	<b>305.468.000</b>



# PLANT HEALTH



- Implementation of National Plant Health Program
- Plant quarantine and plant passport activities
- Control and registration of plant protection products and equipment's.
- Phytosanitary controls regarding export and import
- [Actions taken for minimizing of site affect of plant protection activities to the environment and human health](#)
- Publication of many training documents to the growers and extension stuff about plant health and quarantine.

Pesticide usage has decreased by a third:

- [Promotion of Integrated Pest Management and Integrated Crop Management activities](#)
- Prohibition of chemical pesticides and fertilizer applications by air
- Selling permission of plant protection products for retailers is granted after examination.
- Prescription sale of plant protection products, certification of PPP users/applicators and recording obligations of PPP for growers.
- Providing subsidies for those applying biologic and biotechnic control methods (traps and pheromons) instead of chemical use.
- Implementation of pre-harvest pesticide residue control program
- Introduction of side effect trials for registration of pesticides
- Prohibition of 180 high risky pesticide active ingredients
- Intensive training for extension staff about IPM
- Farm Field School training system for farmer about IPM
- Long term IPM implementation project





# RESIDUE CONTROL PROGRAM

---

## Pre-harvest Residue Control Program (PrHRCP):

- [\*Pre-Harvest Residue Control Program\*](#)
- Samples are taken from field, greenhouse and orchard before harvesting of products due to check the residue level of pesticide.
- Samples which found as high MRL are not allowed for harvest or destroyed immediately.
- Our goal is to decrease pesticide residue as much as possible and not let the contaminate product to rich market



# RESIDUE CONTROL PROGRAM

---

## **Post-harvest Control:**

- All risky products are objected to national residue control program while they are in market.
- By implementation of pre-harvest residue control program; results showed that, residues decreased by 52% in post-harvest program and positive feedback received from the exported products by 34%
- Squash and pear was removed from the control list on May 8, 2011 on export to EU
- After success story of residue control program; tomato, the main exported vegetable exported to EU from Turkey to EU, has taken out of from the EU control list since first October , 2013,



# **ANIMAL HEALTH AND WELFARE**



- Plans and programs for the protection of animal health
- Identification and registration of animals
- Animal movements
- Animal welfare
- Official controls in import and export
- Licensing veterinary health products
- Foodborne zoonotic diseases and antimicrobial resistance



## ANIMAL HEALTH

---

- FMD-free status of Thrace has been approved by the World Animal Health Organization (OIE) on 27 May 2010
- GMP (Good Manufacturing Practices) required for the production of veterinary medicinal products
- The animal welfare legislation has been published and animal breeders were informed
- Struggling with the diseases brucellosis and bovine tuberculosis, supporting of business free from diseases and
- Control of *Salmonella* and other zoonotic agents are activities carried out





# FOOD AND FEED SAFETY



# FOOD AND FEED SAFETY

---

- Turkish Food Codex
- Registration and approval of food and feed establishments
- The minimum technical and hygienic conditions and specific hygienic conditions of food establishments
- Food supplements
- Official controls of food and feed
- Food contact materials
- Feed additives



- [Food Establishments](#)
  - Registered
  - Approved
- [Feed Establishments](#)
  - Registered
  - Approved
- [ALO 174 call center](#)
- [Consumer information](#)



## FOOD CONTROL

---

- The amount of salt reduced in diet:
- Mandatory to label salts with *“Lower salt take and protect your health”* term
- Salt content is reduced by 25% in bread, 64% in tomato paste, and the amount is reduced from 8,5% to 7% on dry matter in red pepper flakes and pastırma
- Cheese and olive are undertaken to reduce the use of salt
- Prohibition of adding sugar to fruit juices (currently is 150 g/L)
- White-red meat preparations and mechanically separated meats are prohibited in meat products
- Regulation on imports, production, processing and placing on the market of the food supplements was published, Advisory Board was established, "approval" procedure became mandatory for these products



# RISK ASSESSMENT





## RISK ASSESSMENT

---

To carry out studies which constitutes basis for risk assessment on animal health and welfare, plant health, feed and food safety issues:

- To establish scientific commissions and committees and carry out their secretariat,
- To collect and analyze data basis for risk assessment,
- To create a scientific advisory opinion,
- To collaborate with national and international organizations,
- To carry out the necessary work for risk communication and management.



## **Executives**

- Consultative Committee
- Scientific Commissions
- Scientific Committee
- Expert Database



# DATABASE

- Food Safety Information System (GGBS)
- Animal Registration System for Cattle and Sheep (TURKVET)
- Sheep Goat Registration System (KKKS)
- Follow-up Authorization of the Prescribing and Applying of Plant Protection Products
- Classification of Establishments
- Recording of the Licensed Veterinary Medicinal Products
- Monitoring of Investment Projects
- Laboratory Information System
- Source Catalogue
- Tracking The Use of Methyl Bromide (MeBr)
- Plant Protection Registry System
- Plant Passport Registry System

**Contact:**

**GIDA, TARIM ve HAYVANCILIK BAKANLIĐI**  
**Gıda ve Kontrol Genel MüdürlüĐü**  
**Eskişehir Yolu 9.Km., Lodumlu / ANKARA**

**[www.tarim.gov.tr](http://www.tarim.gov.tr)**

